



Kementerian
Lingkungan Hidup dan Kehutanan
Republik Indonesia

*Ministry
of Environment and Forestry
Republic of Indonesia*

PERMEN LHK P.75/2019

MOEF Regulation P.75/2019

PETA JALAN PENGURANGAN SAMPAH OLEH PRODUSEN

Waste Reduction Roadmap by Producers



VISI

Vision

Implementing responsible and sustainable production and consumption in manufacturing, food and beverage services, and retail businesses in line with circular economy principles



SITI NURBAYA

**Minister of Environment and
Forestry of the Republic of
Indonesia (MoEF)**

“ In the context of waste management, circular economy practices can be implemented through practices of waste reduction, redesign, reuse, reproduction and direct recycling. ”

There is one thing I want to emphasize in this case, namely that the circular economy here is not just recycling waste, but is the concept of maximizing the value of using a product and maximizing the value of using a product and its components continuously, so that no resources are wasted (*resources* . *efficiency*). In the context of waste management, circular economy practices can be implemented through waste reduction, redesign, reuse, reproduction and direct recycling practices. This is achieved through implementing producer's responsibility in waste reduction, technology transfer, and implementing new business models.

In building a circular economy ecosystem, the position of producers and waste banks is very important because waste banks and producers can build partnerships in the take back system and collection of waste products, containers and/or packaging produced by producers for recycling.

Speech of the Minister of Environment and Forestry at the 2023 National Waste Care Festival in commemoration of World Environment Day on 13 June 2023



ROSA VIVIEN RATNAWATI

**Director General of Solid
Waste, Hazardous Waste, and
Hazardous Materials
Management - MoEF**

“ ...from now on and in the future, only sustainable business *will* grow and survive because it is no longer an option, but a necessity. ”

I want to emphasize that when the government issued policies and regulations, especially regarding waste management, I hope that business actors will not immediately conclude that these policies and regulations are as a burden and disruption for your business.

On the contrary, through these policies and regulations the government is actually opening up the ways, opportunities, and at the same time challenges for building environmentally responsible businesses, namely sustainable businesses that align between profit with *people* and *the planet* .

I want to state that, from now on and in the future, only sustainable business *will* grow and survive because it is no longer an option, but a necessity.

Key Remarks from the Director General of Solid Waste, Hazardous Waste, and Hazardous Materials Management at the National Dialogue on Waste Reduction by Producers: Opportunities and Challenges towards Sustainable Business

ABOUT MOEF REGULATION P.75/2019

Regulation that encourage **the development of innovation in the process of manufacture and distribution of products, containers, and packaging** as well as providing services in the manufacturing, food & beverage service, and retail industries that are **integrated from upstream to downstream in a responsible manner** and in line with **circular economy principles**



to achieve
the vision

**MoEF
Regulation
P.75/ 2019?**

Waste reduction
by producers is
carried out with
the principles:



1 REDUCE

Limiting the waste
generation

2 REUSE

Reusing the waste

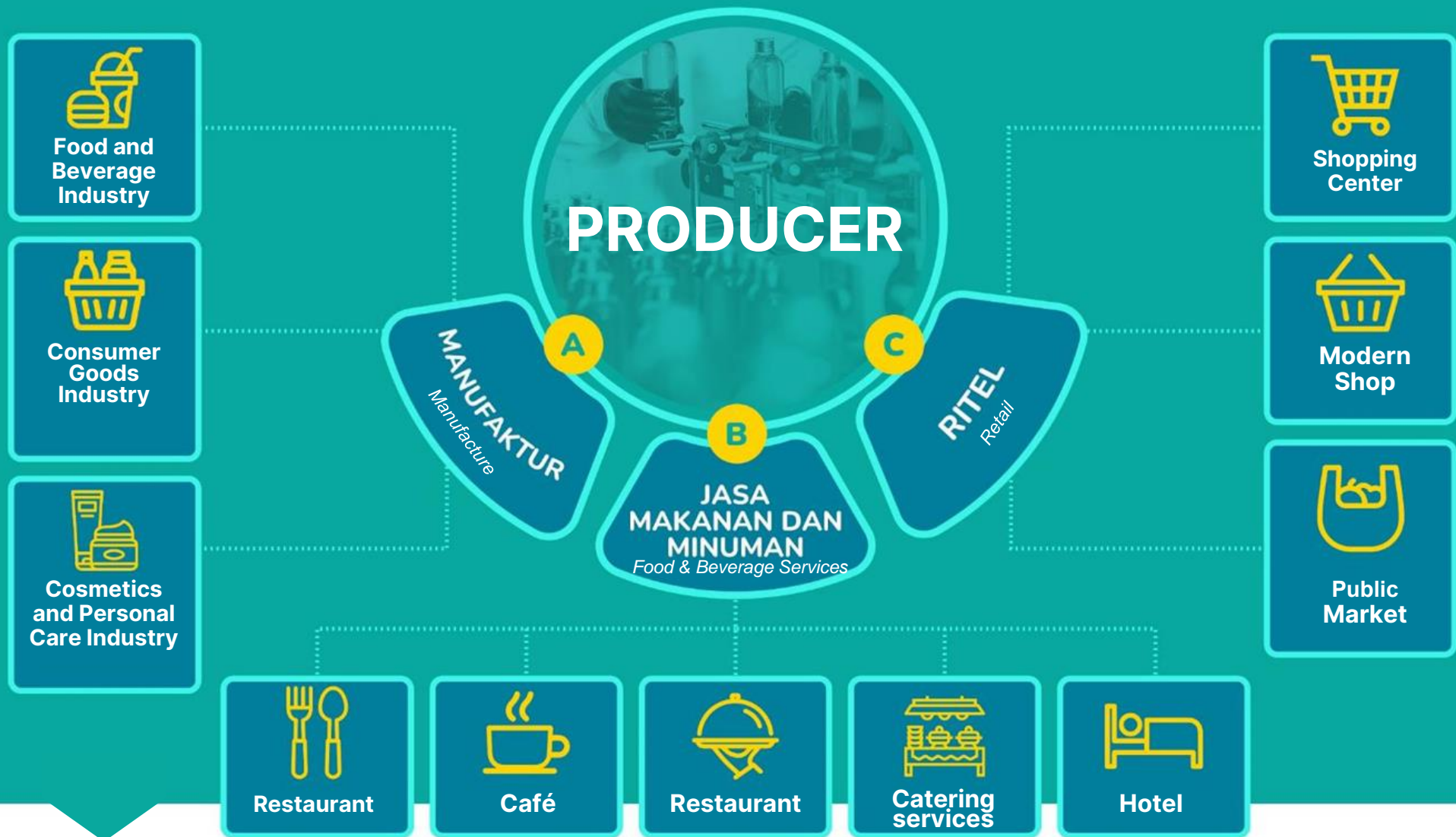
3 RECYCLE

Recycling the waste

PRODUCER

01





Producers are business actors who produce goods that using packaging, distribute goods that using packaging and are imported, or sell goods using containers that cannot or are difficult to decompose by natural processes.

PROFILING OF PRIORITY PRODUCERS

MANUFACTURE SECTOR

Multinational Companies
National Companies
Group Companies
Public Companies (Tbk)
Most Consumed Products
Most Packaging Waste (Brand Audit)

					
 PT SANTOS JAYA ABADI	 PT. MASUTAMA WING	 PT. WINGS SUN	 PT. WINGS SUN	 WINGSFOOD	 MANUFACTURING
	 PT. Prakarsa Alam Segar	 おいしいと健康			
 PT. KARUNIA ALAM SEGAR	 MAYORA	 MAYORA		 PT TIRTA FRESINDO JAYA	
	 PT Ultra Prima Abadi ORANG TUA GROUP	 KraftHeinz	 ABC	 PT TriSumber Makmur Indah	
		 WISATA & RAJUKI PROPOSAL 1992 - 1999		 LAMBAANG MAKANAN BERMUTU	
		 PT TIRTA SUKSES PERKASA		 PT. INDO LAKTO	
 PT INDOFOOD FORTUNA MAKMUR		 PT. Indokuat Sukses Makmur		 PT Nugraha Indah Citarasa Indonesia (NICI)	

*The following are examples of companies in the category of manufacture sector

PROFILING OF PRIORITY PRODUCERS

FOOD & BEVERAGE SERVICES SECTOR:

RESTAURANTS & CAFES

Multinational Companies
National Companies
Group Companies
Public Companies (Tbk)
Most Consumed Products
Most Packaging Waste (Brand Audit)

ISMAYA® CREATING THE GOOD LIFE		socialhouse™ RESTAURANT · BAR · WINEPOST		DRAGONFLY		BLOWFISH	
SPECIAL SAMBAL		Soylce me		pizza & birra		ISMAYA LIFESTYLE MEMBERS PROGRAM	
INSPIRE ARTISTRY		TOKY-BELLY		Pochajjang!		kitchenette® Restaurant · Crêperie	
ISMAYA LIVE™		SKYE™		DJOURNAL COFFEE		Krispy Kreme DOUGHNUTS™	
DWP		MAGNUM		GENKI SUSHI		THE PEOPLE'S CAFE	
OSENG MIE JONTOR!		Xiji		JCF		Monsieur Spoon FRENCH BAKERY CAFE	
MBA		PT CHAMP RESTO INDONESIA TBK		KITA TIJU RA		GODIVA Chocolatier	
Raa efa		GOKANA		Platinum RESTO & CAFE		bmk	
Suki & BBQ		KFC		Platinum GRILL		Yum!	
TACO BELL		PAUL		CROCO		COLD STONE	
KEDAI KOPI KULO		DEWATA		the Habit BURGER GRILL		SUSHI GROOVE	
PIZZA MARZANO		Mr. Fox		Krispy Kreme		SUSHI GROOVE	
XIBOBA		GIANT		kitchenette		GIA	
TACO BELL		KFC		Platinum GRILL		Yum!	

*The following are examples of companies in category of the food & beverage services sector

PROFILING OF PRIORITY PRODUCERS

FOOD & BEVERAGE SERVICES SECTOR:

HOTEL

International Chain Hotels
National Chain Hotels
Member of PHRI (Association of Hotels)
5 Star Hotels
4 Star Hotels
Hotel certified CHSE – by Ministry of Tourism and Creative Economy



*The following are examples of companies in category of the food & beverage services sector

**PROFILING OF
PRIORITY PRODUCERS**

**FOOD & BEVERAGE
SERVICES SECTOR:**

**CATERING
SERVICES**

Catering services that
handle international
scale MICE activities

Catering services that
handle national scale
MICE activities



PUTU MADE



PISH & POSH CAFE

*The following are examples of companies in category of the food & beverage services sector

PROFILING OF PRIORITY PRODUCERS

SECTOR RETAIL :

MODERN SHOP

Multinational Companies
National Companies
Group Companies
Public Companies (Tbk)
Modern Shop that has the largest number of outlets
Member of APRINDO (Association of Retails)

LEVI STRAUSS & CO.		 The Smiling Gift Shop									
 Business Solutions				 BEST DENKI		 ONE STOP KITCHEN SOLUTION					
				 PT. AUTOJAYA IDETECH PT. SOLUSI PERIFERAL						 Best Choice, Service & Quality	
 banyak di SUPERMARKET BAHAN BANGUNAN								 creating smiles			
						 BUILDING MATERIALS & HOME IMPROVEMENT					
 A Member of the Primer Group		THE TIME PLACE						 member of erajaya group			
		 strategic consulting				 INNOVATION • DESIGN • VALUE					

*The following are examples of companies in category of the retail sector

PROFILING OF PRIORITY PRODUCERS

SECTOR RETAIL :

SHOPPING CENTER

Multinational Restaurant & Cafe Companies

National Restaurant & Cafe Companies

Group Companies

Public Companies (Tbk)

Member of APPBI (Association of Shopping Centre)

Shopping center

*The following are examples of companies in category of the retail sector

PROFILING OF PRIORITY PRODUCERS

SECTOR
RETAIL :

MARKET

Located in area with
Local Governments who
already implemented
Single-Use Plastic
Restriction Regulations

Markets that have/are
currently conducting
trials to reduce the use
of plastic bags

Member of APPSI
(association of market
traders)



*The following are examples of companies in category of the retail sector

ROADMAP

2022



ASSIGNMENT AND AUTHORITY

MINISTER OF ENVIRONMENT AND FORESTRY

01
Oversee Waste Reduction by Producers

02
Develop Criteria and Methods for Measurement and Recycling Levels

03
Develop Criteria for Minimum Recycled Material Content in Packaging Product

04
Develop Criteria for Packaging Product Marking

05
Coordinate and Evaluate Waste Reduction Implementation by Producers

06
Compile the level, status, and trends in the amount of national waste reduction by producers

07
Carry out Guidance to the Provincial Government

08
Prepare and develop incentive schemes for local governments and/or producers

09
Implement Communication, Information, and Education Strategies for the Community

GOVERNORS

01

Oversee Waste Reduction by Producers

02

Evaluate Waste Reduction by Producers

03

Provide guidance to Regency/City Regional Governments

04

Preparing and Developing Incentive Schemes for Producers

05

Developing Communication Strategies, Information, and Education for the Community

REGENTS AND MAYORS

01

Oversee Waste Reduction by Producers

02

Evaluate Waste Reduction by Producers

03

Preparing and Developing Incentive Schemes for Producers

04

Developing Communication, Information, and Education Strategies for the Community

Ministers, Governors, and Regents/Mayors in accordance with their authority apply sanctions to producers who do not reduce waste. Sanctions are implemented in accordance with statutory provisions.

Enhancement public understanding regarding the risks of products, product packaging, and/or containers that cannot or are difficult to decompose by natural processes, on environment

1

Enhancement public understanding regarding product labels, product packaging, and/or containers that can be recycled and/or reused continuously

2

Increasing public understanding regarding the mechanism for returning products, product packaging, and/or containers to collection facilities

3

Opportunities and benefits in recycling and/or reusing products, product packaging, and/or containers

4

Community advocacy in reducing waste

5

Mainstreaming the waste reduction information into the curriculum education

6

Other forms are in accordance with developments in science

7

COMMUNICATION STRATEGIES, INFORMATION, AND EDUCATION

IN THE MOEF REGULATION P.75/2019

**Ministers, Governors
and Regents/Mayors
in accordance with
their authority can
provide Incentives or
Disincentives to
Producer.**

**Publication of
performance
appraisals is
not good
through print
or electronic
media**

Award

**Publication of good
performance
appraisals**

**Other forms that are in
accordance with
scientific
developments and
statutory provisions**

DISINCENTIVE

INCENTIVE

CIRCULAR ECONOMY

04



CIRCULAR ECONOMY POLICY INSTRUMENTS IN THE MOEF REGULATION P.75/2019

Elimination of products

Product packaging and/or containers that are difficult to reuse and recycle through Phase Out by January 1, 2030



Packaging made from PVC and PS

Sachet packaging size <50 ml or <50 gr

Dedicated plastic Straw

Plastic shopping bag

Disposable food and beverage utensils (single-use cutlery) include plates, glasses, spoons, forks, straws, and plastic foam containers.

Re-design

So it's easy to recycle



Use materials that can be recycled or reused

Use recycled materials (50% recycled content)

Remove recycling process contaminants (e.g. labels and seals)

Changing multi-material/mono-layer packaging materials to mono-material/mono-layer

The color of PET beverage packaging is clear/transparant or bluish

Right-sizing for various types of packaging

Application of Ecolabel

Packaging Markers



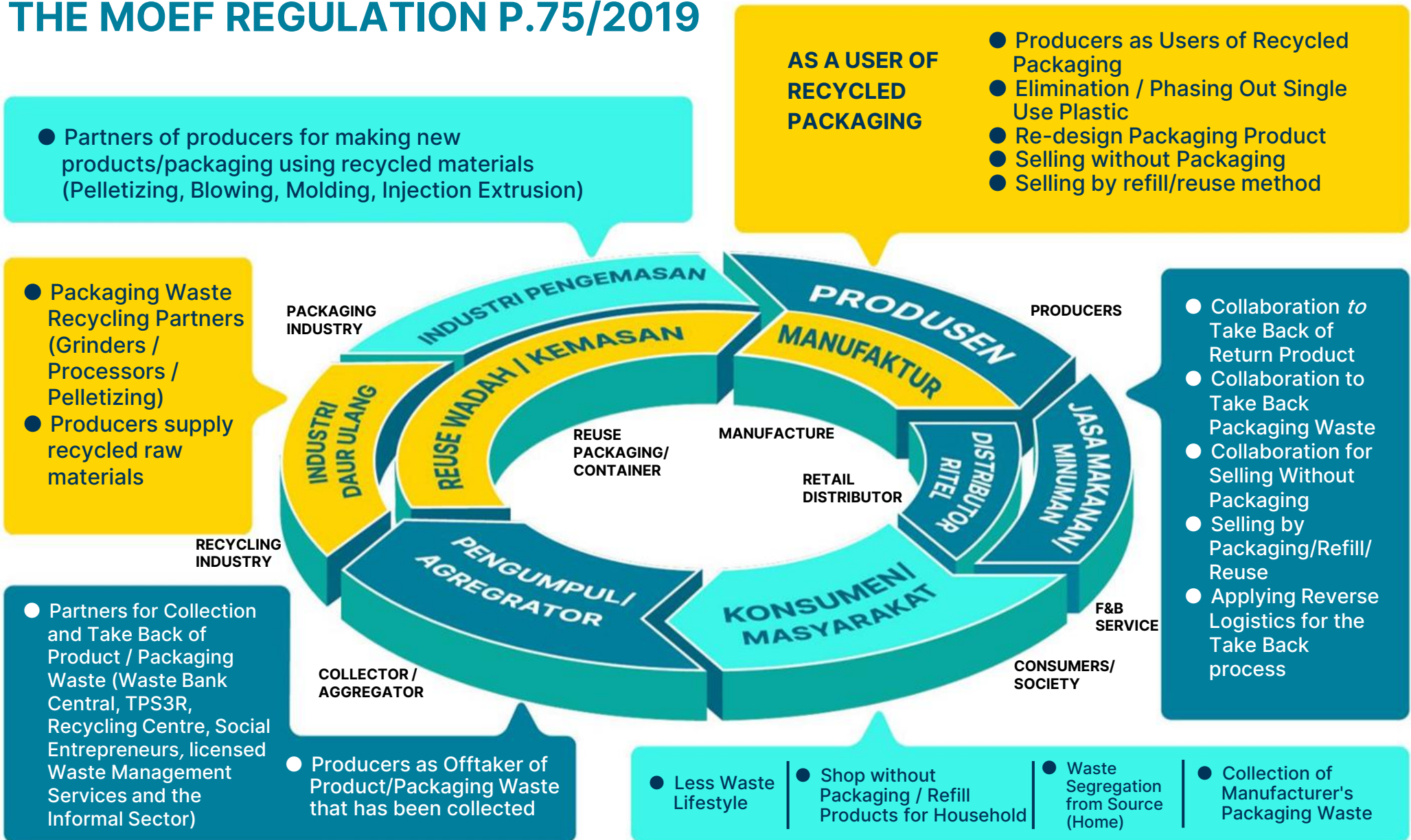
Easy to compost (*compostable*)

Easy to recycle (*recyclable*)

Easy to reuse (*reusable*)

Contains recycled materials (*recycled content*)

CIRCULAR ECONOMY ECOSYSTEM IN THE MOEF REGULATION P.75/2019



- Partners of producers for making new products/packaging using recycled materials (Pelletizing, Blowing, Molding, Injection Extrusion)

- AS A USER OF RECYCLED PACKAGING**
- Producers as Users of Recycled Packaging
 - Elimination / Phasing Out Single Use Plastic
 - Re-design Packaging Product
 - Selling without Packaging
 - Selling by refill/reuse method

- Packaging Waste Recycling Partners (Grinders / Processors / Pelletizing)
- Producers supply recycled raw materials

- Collaboration to Take Back of Return Product
- Collaboration to Take Back Packaging Waste
- Collaboration for Selling Without Packaging
- Selling by Packaging/Refill/Reuse
- Applying Reverse Logistics for the Take Back process

- Partners for Collection and Take Back of Product / Packaging Waste (Waste Bank Central, TPS3R, Recycling Centre, Social Entrepreneurs, licensed Waste Management Services and the Informal Sector)

- Producers as Offtaker of Product/Packaging Waste that has been collected

- Less Waste Lifestyle
- Shop without Packaging / Refill Products for Household
- Waste Segregation from Source (Home)
- Collection of Manufacturer's Packaging Waste

List of Provincial/City/Regency Governments that Have Regulation for Restricting the Use of Single-Use Plastics

114
LOCAL
GOVERNMENT

*Data as of August 2023

1. DKI Jakarta Province
2. Bali Province
3. Ambon City
4. Bandung Regency
5. Balikpapan City
6. Banda Aceh City
7. Bandung City
8. Bangka Regency
9. Banjar District
10. Banjarbaru City
11. Banjarmasin City
12. Banyumas Regency
13. Barito Kuala District
14. Batu Bara District
15. Baubau City
16. Bekasi City
17. Bekasi Regency
18. Berau District
19. Biak Numfor District
20. Bitung City
21. Blitar City
22. Boalemo Regency
23. Bogor City
24. Bogor Regency
25. Bontang City
26. Brebes Regency
27. Bukittinggi City
28. Ciamis Regency
29. Denpasar City
30. Depok City
31. Hulu Sungai Utara District
32. Indramayu Regency
33. Jambi City
34. Kapuas District
35. Kudus Regency
36. Langsa City
37. Lebak Regency
38. Lumajang Regency
39. Makassar City
40. Merauke Regency
41. Muara Enim District
42. Musi Banyuasin District
43. Nunukan District
44. Padang City
45. Palembang City
46. Pamekasan District
47. South Coastal District
48. Polewali Mandar District
49. Pontianak City
50. Prabumulih City
51. Probolinggo City
52. Purwakarta Regency
53. Rokan Hilir Regency
54. Rokan Hulu Regency
55. Samarinda City
56. Semarang City
57. Siak Regency
58. Sidenreng Rappang District
59. Sigi District
60. Situbondo Regency
61. Solok City
62. Sukabumi District
63. Sukabumi City
64. Tanah Bumbu District
65. Tanah Laut District
66. Tanjungbalai City
67. Tapin District
68. Tarakan City
69. Tebing Tinggi City
70. Tuban Regency
71. Wajo District
72. Wonogiri Regency
73. Asmat Regency
74. Surabaya City
75. Salatiga City
76. District Kendal
77. District Wakatobi
78. Tanah Datar District
79. Gresik Regency
80. Gianyar Regency
81. Tabalong District
82. Selayar Islands Regency
83. East Kutai Regency
84. Tegal Regency
85. Batu City
86. North Penajam Paser District
87. District South Buru
88. East Lombok Regency
89. West Aceh District
90. Bantaeng District
91. Pekalongan Regency
92. Madiun Regency
93. Kupang City
94. Pare Pare City
95. Pati Regency
96. Tanjung Pinang City
97. District Katingan
98. District Jombang
99. South Tangerang City
100. Karang Asem Regency City
101. Tangerang City
102. Palangkaraya City
103. Mataram City
104. District Sragen
105. District Cilacap
106. Dumai City
107. District West Garlic Bones
108. District Ngawi
109. District Central Bangka
110. District Kampar

Acceleration of Implementation of MoEF Regulation P.75/2019 : Restrictions of Single-Use Plastics in Regions

KATEGORI	Sumatra Regional	Java Regional	Bali Nusra Regional	Kalimantan Regional	Sulawesi Maluku Regional	Papua Regional	Total
01 PROVINCE	0	1	1	0	0	0	2
02 METROPOLIS	1	7	0	0	1	0	9
03 BIG CITY	2	1	1	5	0	0	9
04 MEDIUM CITY	5	11	2	3	4	0	25
05 SMALL TOWN	17	19	4	13	9	3	65
JUMLAH	25	38	7	20	14	3	110

*Data as of August 2023

42

Producers have submitted
Waste Reduction Plan
documents

120

Producers are preparing
Waste Reduction Plan
documents through the
application

16

Producers are already at
the Implementation and
Trial stage of MoEF
Regulation P.75/2019

IMPLEMENTATION PROGRESS REPORT MOEF REGULATION P.75/2019

1. PT. Ajinomoto Indonesia

2. PT. Bina Karya Prima

3. PT. Coca-Cola Bottling
Indonesia

4. PT. Heinz ABC Indonesia

5. PT. Lion Super Indo

6. PT. L'Oreal Indonesia

7. PT. Nestle Indonesia

8. PT. Nutrifood Indonesia

9. PT. Oasis Water
International

10. PT. Procter & Gamble
Home Products
Indonesia

11. PT. Softex Indonesia

12. The Body Shop
Indonesia

13. PT. Tirta Fresindo Jaya

14. PT. Tirta Investama

15. PT. Unilever Indonesia

16. PT. Yakult Indonesia
Persada

*Data as of August 2023



Kementerian
Lingkungan Hidup dan Kehutanan
Republik Indonesia

Mari Cegah, Pilah dan Olah Sampah
Mulai dari Hal Kecil, Mulai dari Diri
Sendiri, Mulai dari Sekarang.

*Let's prevent, segregate, treat solid waste
from small effort, from ourself, from now.*

PERMEN LHK P.75/2019



implemented by:

giz Deutsche Gesellschaft
für Internationale
Zusammenarbeit (GIZ) GmbH



3RproMar



Directorate of Waste Reduction
MINISTRY OF ENVIRONMENT AND FORESTRY
Building A 5th Floor, Jl. IN Panjaitan Kav. 24
Jakarta 13410, Tel/Fax: 021 – 85904932

Reduce, Reuse, Recycle to Protect the Marine Environment and Coral Reefs (3RproMar)
Deutsche Gesellschaft für Internationale Zusammenarbeit (GIZ) GmbH ASEAN Secretariat
– Heritage Building 2nd floor
Jl. Sisingamangaraja 70 A, Kebayoran Baru, Jakarta, Indonesia – 12110

Prepared by: *Greeners.Co*
Translated by: *GIZ 3RproMar (Ocasa)*